

ORDINANCE No. 326-2018

AN ORDINANCE TO VACATE A STREET/ALLEY WITHIN THE CITY
LIMITS OF STEPHENS, ARKANSAS

WHEREAS, a Petition was duly filed with the City Council of the City of Stephens, Arkansas, asking the City Council to vacate and abandon a certain street/alley designated on the plat of the City of Stephens, Ouachita County, Arkansas as recorded in the plat of said City or Record in the Office of the Recorder of Ouachita County, Arkansas.

WHEREAS, after due notice as required by law, the council has heard all the persons desiring to be heard on the questing and has ascertained that the street/alley hereinbefore described, has heretofore been dedicated to the public use as street/alley herein described; has not actually been used by the public for a period of at least five (5) years subsequent to the filing of the plat that all the owners of the property abutting upon the portion of the street/alley to be vacated have filed with the council their written consent to the abandonment; and that the public interest and welfare will not be adversely affected by the abandonment of the street/alley.

NOW, THEREFORE, be it ordained by the City of Stephens, Arkansas:

Section 1: The City of Stephens, Arkansas, releases, vacates, and abandons all its rights, together with the rights of the public generally, in and to the street/alley designated in Exhibit "A" attached.

Section 2: A copy of the ordinance certified by the City Recorder/Treasurer shall be filed in the office of the County Clerks and County Records Department.

Section 3: An emergency exists and this ordinance shall be in full effect and force from and after its passage.

PASSED AND APPROVED ON THIS 16 DAY OF July, 2018.



Mayor Harry Brown

Recorder/Treasurer

Faint, illegible text, possibly bleed-through from the reverse side of the page.

Faint, illegible text, possibly bleed-through from the reverse side of the page.

Faint, illegible text, possibly bleed-through from the reverse side of the page.

Faint, illegible text, possibly bleed-through from the reverse side of the page.



LANDMARK SURVEYING



Basis of Bearing:
North as taken from GPS
Arkansas State Plane, NAD 83

Survey Description

All of Lots 1, 2, 3, and 4 in Block 2 of McMurry Addition to the town of Stephens, Ouachita County, Arkansas.

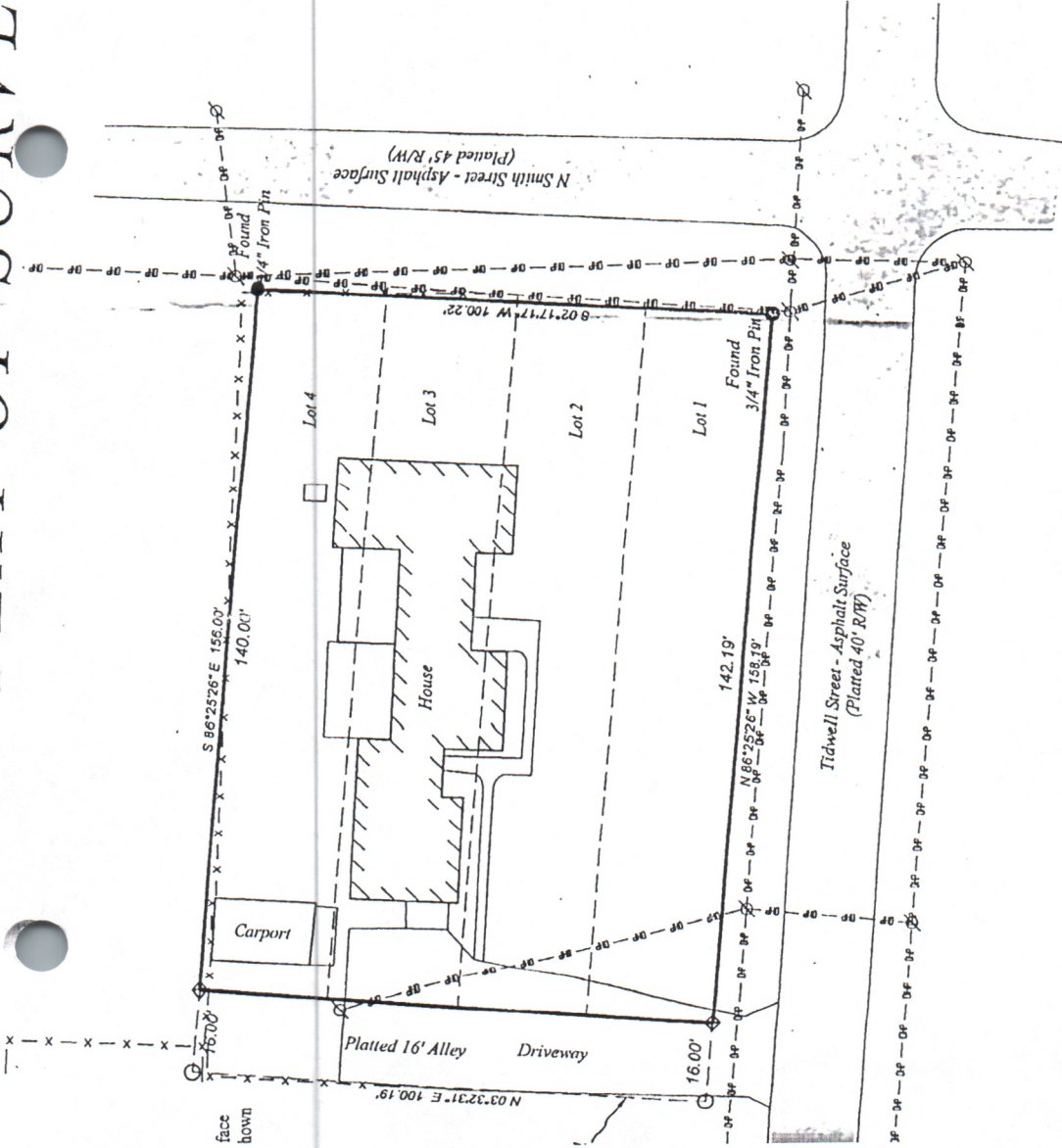
Surveyor's Notes

- Reference documents used for this survey:
 - Plat of McMurry Addition as filed in the Plat Records for Ouachita County, Arkansas.
 - Plat of Survey by PS# 1103 for Gary Delaney dated 12/03/1987.
- All monuments set are 1/2" rebar with plastic caps stamped NIX, PS# 1760 unless otherwise noted.
- Current records do not indicate the 16' Alley has been vacated. On ordinance vacating said alley will need to drawn up in order for Mr. Green to have title to the full area possessed by the subject property.

Certification

I, David Nix, Professional Land Surveyor, do hereby certify that the plat shown hereon is a true and accurate representation of a survey made under my direction and supervision.

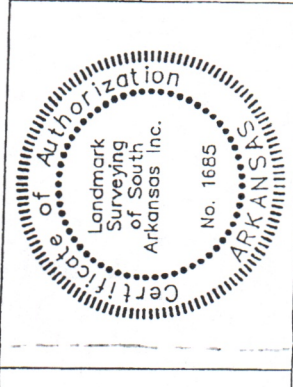
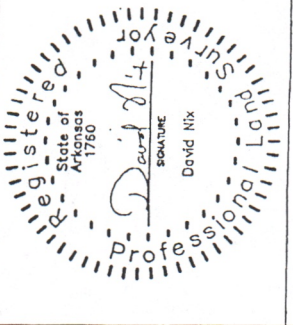
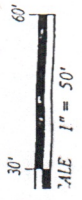
David Nix
David Nix PS# 1760



VD

- BOUNDARY LINE
- MONUMENT FOUND
- ALICULATED
- TOWER POLE

- BOUNDARY LINE
- ALLEY/LOT LINE
- FENCELINE
- OVERHEAD POWERLINE



LOTS 1, 2, 3, AND 4 IN BLOCK 2 OF MCMURRY ADDITION TO THE TOWN OF STEPHENS, OUACHITA COUNTY, ARKANSAS.

Landmark Surveying
of South Arkansas, Inc.

P.O. Box 26
Monticello, Arkansas 71657
Office: (870) 367-2200
Email: dnmix1666@comcast.net

Date:
May 4, 2018

Job Number:
18-100 - McMurry Addition - Stephen

Arkansas Plat Code:

